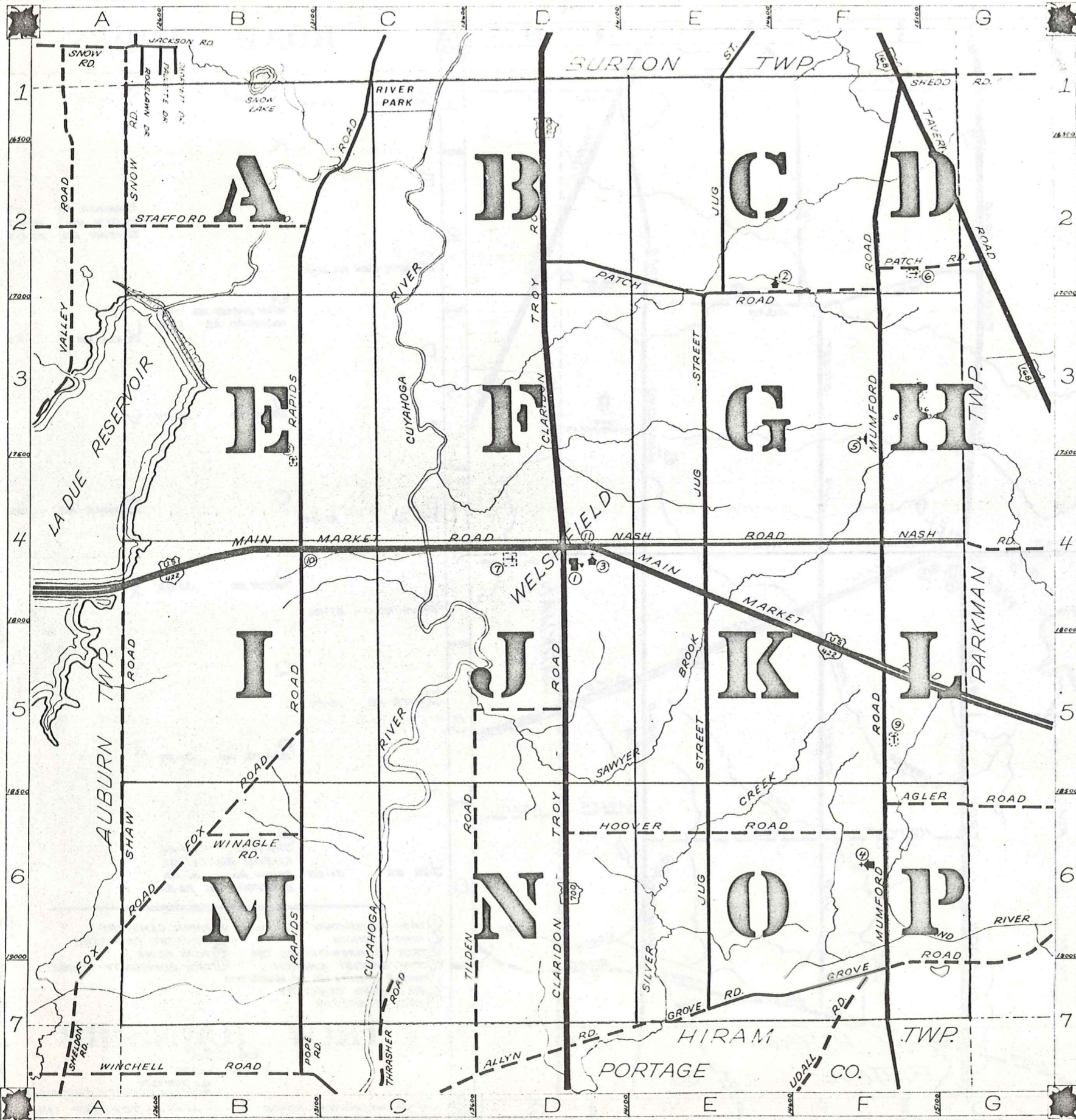


# ROAD INDEX



1	A	AGLER RD F6-G6	J cont.	S cont.
	B		K	
2			L	T THRASHER RD C7 TILDEN RD D5-D7 TAVERN RD F1-G3
	C	CLARIDON TROY RD DI-D7		
	D	M MAIN MARKET RD. A4-G5 MUMFORD RD F1-F7	U	UDALL RD F7
3	E		N	NASH RD D4-G4 V
	F	FOX RD. A7-B5	O	W WINAGLE RD. B6
4	G	GROVE RD E7-G6	P	PATCH RD D2-G2 X
	H	HOOVER RD. D6-F6	Q	Y
5	I		R	RAPIDS RD. C1-B7 Z
	J	JUG ST. E1-E7	S	SHAW RD. A4-A6 SHEDD RD. F1-G1 SNOW RD. A1-A2 STAFFORD RD. A2-B2

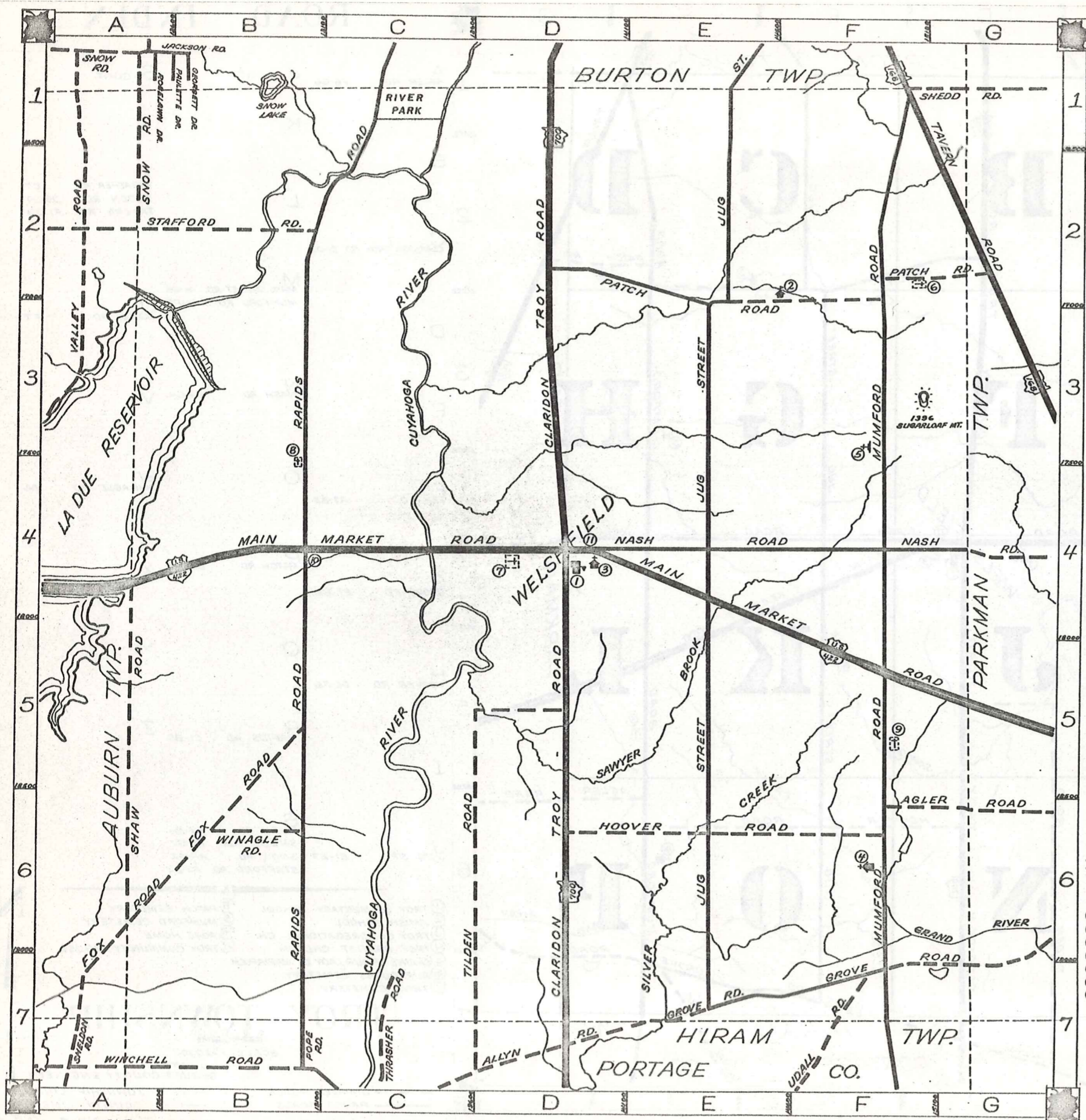
- ① TROY ELEMENTARY SCHOOL
- ② AMISH SCHOOL
- ③ TROY CONGREGATIONAL CH.
- ④ TROY BAPTIST CHURCH
- ⑤ SHRINE OF OUR LADY OF MARIAPOCH
- ⑥ BURKROUGHS CEMETERY
- ⑦ TROY CEMETERY
- ⑧ PATCH CEMETERY
- ⑨ MUMFORD CEMETERY
- ⑩ POPE HOME
- ⑪ TROY COMMUNITY HOUSE

## TROY TOWNSHIP

SCALE: 1"=2000'

O.J. ROBINSON  
GEAUGA COUNTY ENGINEER

--- UNPAVED ROADS  
--- TOWNSHIP LINE  
--- PAVED ROADS  
--- COUNTY LINE



# ROAD INDEX

1	A	AGLER RD. F6-G6	J cont.	S cont.
			K	
2	B		L	T THRASHER RD. C7 TILDEN RD. D5-D7 TAVERN RD. F1-G3
	C	CLARIDON TROY RD. DI-D7		
			M	MAIN MARKET RD. A4-G5 MUMFORD RD. F1-F7
3	D			U UDALL RD. F7
	E		N	NASH RD. D4-G4
				V
4	F	FOX RD. A7-B5	O	W WINAGLE RD. B6
			P	PATCH RD. D2-G2
	G	GROVE RD. E7-G6		X
			Q	Y
5	H	HOOVER RD. D6-F6		
			R	RAPIDS RD. C1-B7
	I			Z
6	J	JUG ST. E1-E7	S	SHAW RD. A4-A6 SHEDD RD. F1-G1 SNOW RD. A1-A2 STAFFORD RD. A2-B2

- ① TROY ELEMENTARY SCHOOL
- ② AMISH SCHOOL
- ③ TROY CONGREGATIONAL CH.
- ④ TROY BAPTIST CHURCH
- ⑤ SHRINE OF OUR LADY OF MARIPOCH
- ⑥ BURROUGHS CEMETERY
- ⑦ TROY CEMETERY
- ⑧ PATCH CEMETERY
- ⑨ MUMFORD CEMETERY
- ⑩ POPE HOME
- ⑪ TROY COMMUNITY HOUSE

## TROY TOWNSHIP

SCALE: 1"=2000'

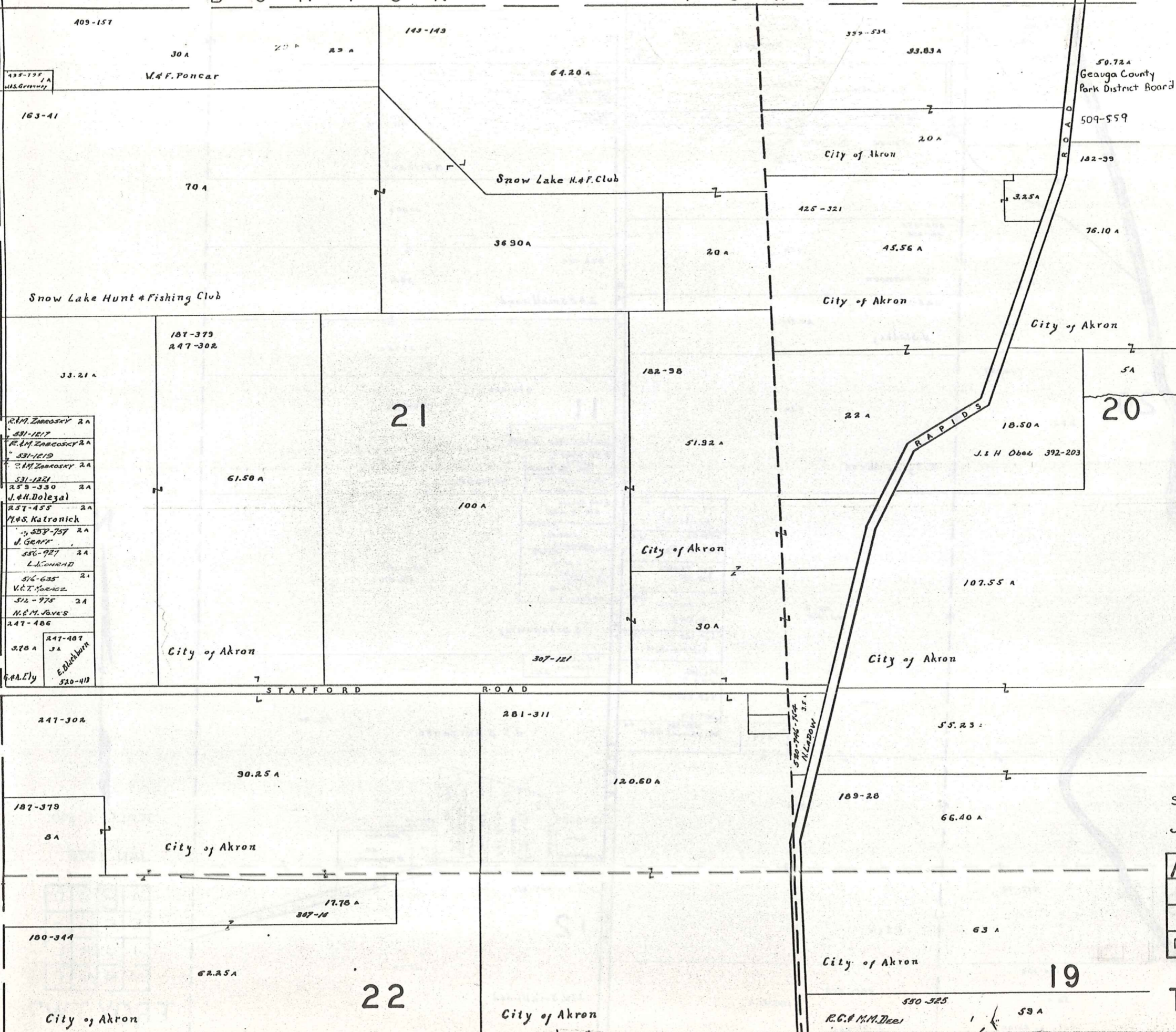
O.J. ROBINSON  
GEAUGA COUNTY ENGINEER

- UNPAVED ROADS
- TOWNSHIP LINE
- COUNTY LINE

B U R T O N T O W N S H I P

T O W N S H I P

A U B U R



- 438-735 1A W.S. Gernsey
- 163-41
- 70 A
- 187-379 2A R.M. Zareosky
- 247-302 2A R.M. Zareosky
- 33.21 A
- 531-1217 2A R.M. Zareosky
- 531-1219 2A R.M. Zareosky
- 531-1221 2A R.M. Zareosky
- 259-330 2A J.H. Dolezal
- 257-455 2A M.S. Katronick
- 558-757 2A J. GRAFT
- 556-927 2A L. CONRAD
- 576-635 2A V.E.T. TORRICE
- 512-975 2A M.E.M. JAVES
- 247-486 2A E.A. Ely
- 247-487 3A E. Blackburn
- 520-413

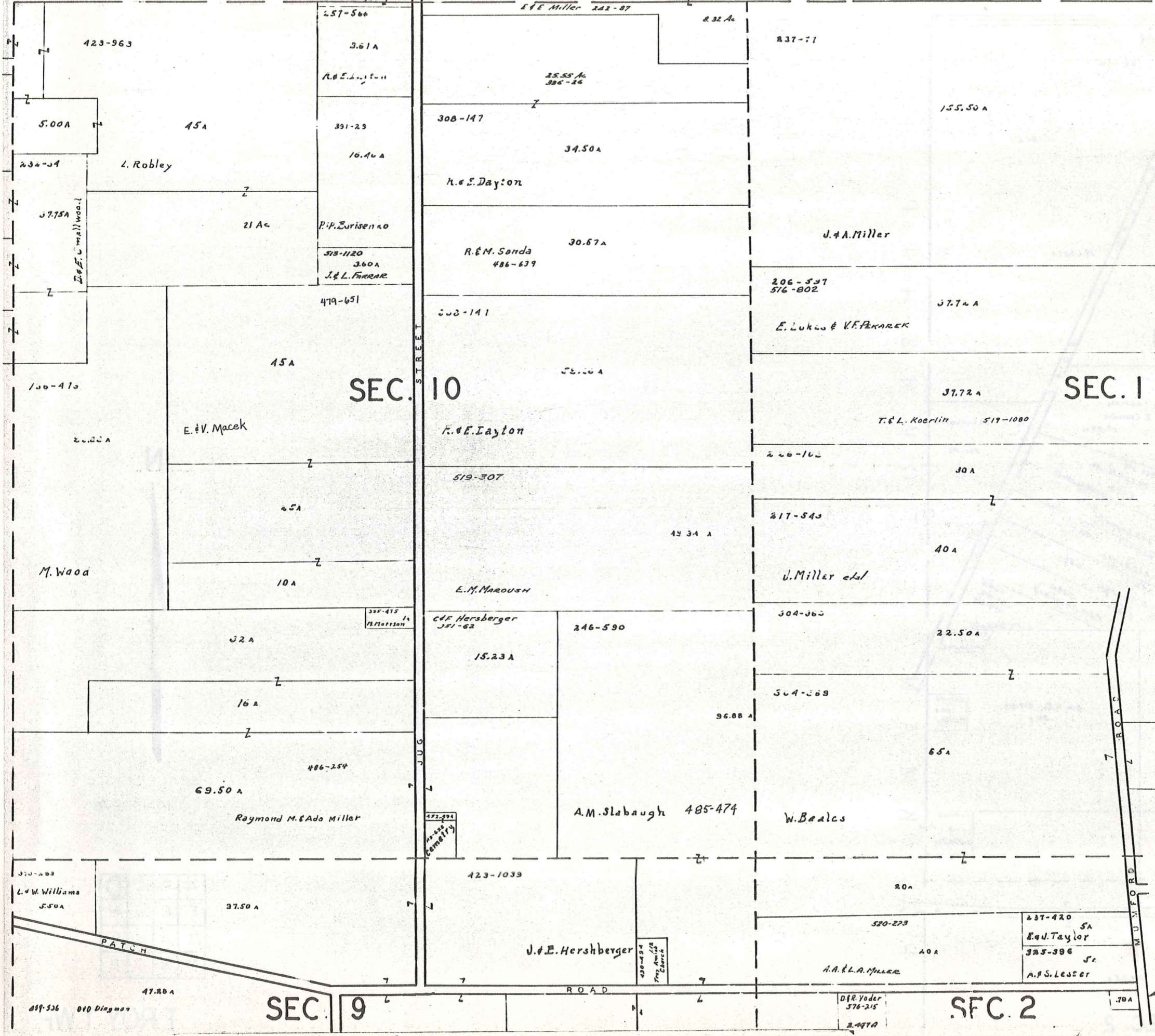


SCALE 1" = 300'  
 JAN. 1976

A	B	C	D
E	F	G	H
I	J	K	L
M	N	O	P

T ROY TWP  
 413





SCALE 1" = 300'  
JAN. 1976

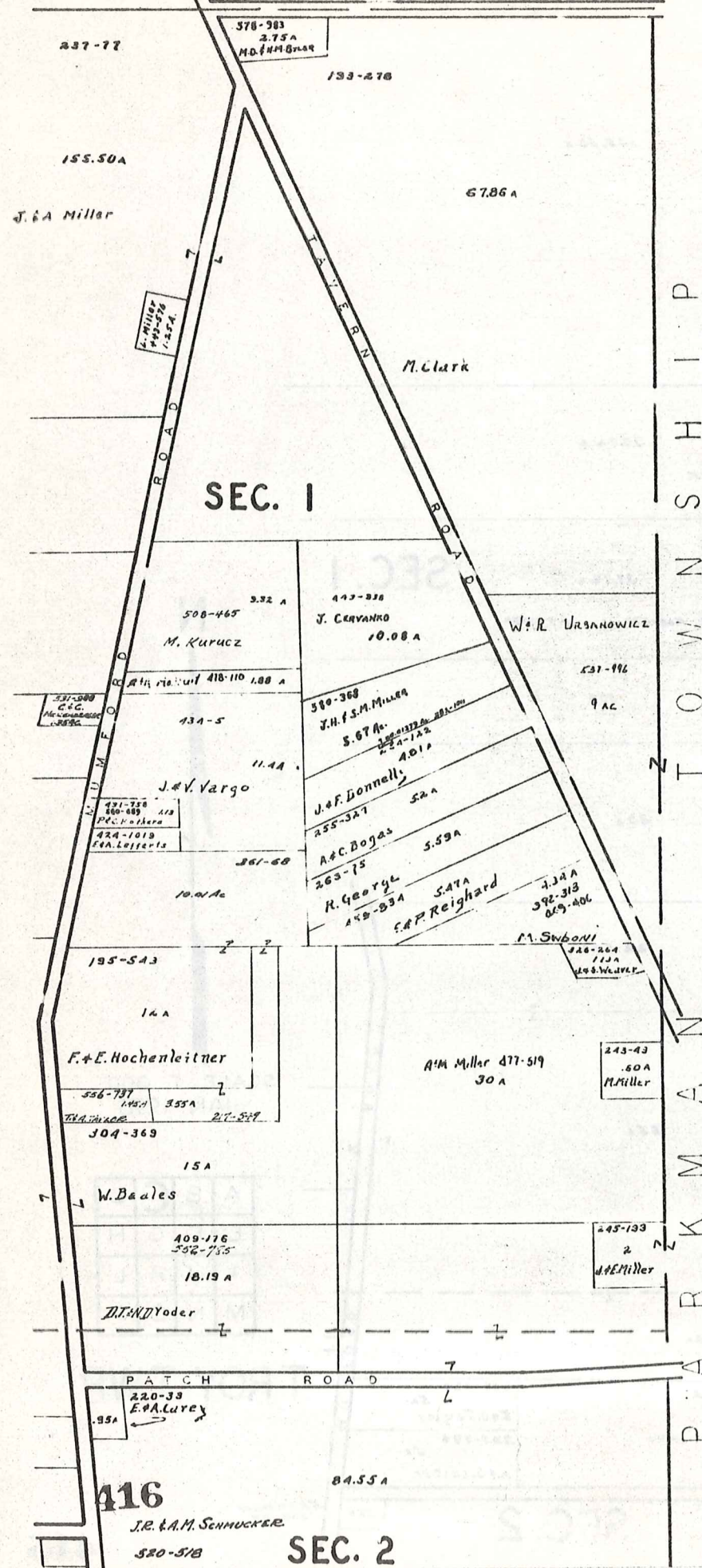
A	B	C	D
E	F	G	H
I	J	K	L
M	N	O	P

TROY TWP

SEC. 9

SEC. 2

BURTON TOWNSHIP



BURTON TOWNSHIP



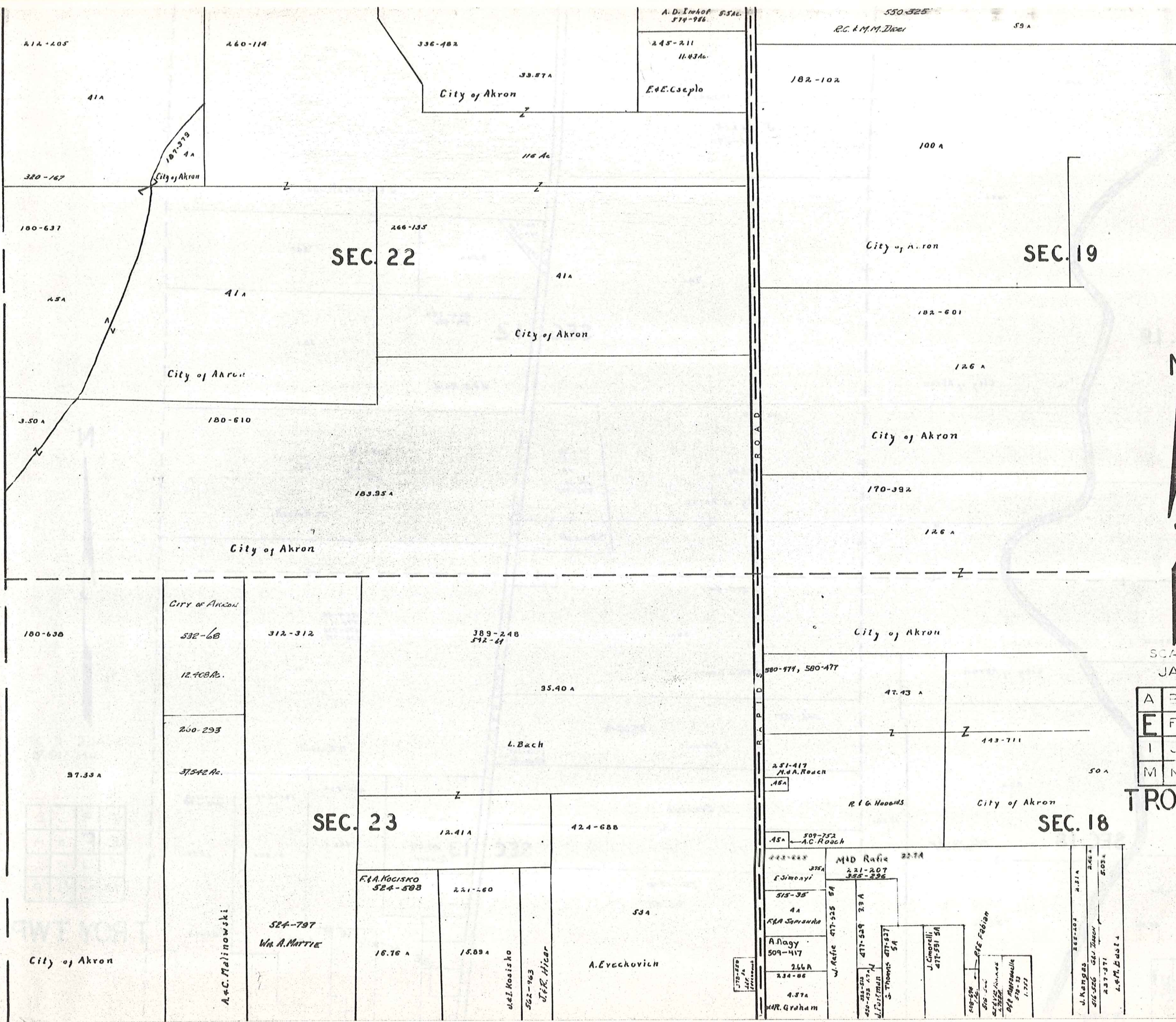
SCALE 1" = 300'  
JAN. 1976

A	B	C	D
E	F	G	H
I	J	K	L
M	N	O	P

T ROY TWP

416  
J.R. & A.M. SCHMUCKER  
520-518  
SEC. 2

T  
O  
W  
N  
S  
H  
I  
P  
  
A  
U  
B  
U  
R  
N



550-325  
R.C. & M.M. Dixon  
59 A

A.D. Imhof 55Ac.  
374-986  
245-211  
11.43Ac.  
E.E. Cseplo

336-182  
33.57A  
City of Akron

182-102

100 A

SEC. 22

SEC. 19

City of Akron

City of Akron

City of Akron

City of Akron

City of Akron

180-638

City of Akron  
532-68  
12.408Ac.

312-312

389-248  
592-64

35.40 A

L. Bach

580-474, 580-477

47.43 A

143-711

50 A

37.33 A

37,542 Ac.

SEC. 23

12.41 A

424-688

251-417  
M.A. Roach  
46A

R. G. Hoenes

City of Akron

SEC. 18

City of Akron

A. & C. Malinowski

524-797  
Wm. A. Martie

F. & A. Kocisko  
524-588

16.76 A

221-260

15.89 A

W. I. Kocisko  
502-963  
J. R. Hicar

A. E. Echevich

53 A

45 A

509-752  
A.C. Roach

445-223  
375A  
E. Simonyi

MID Rate 22.7A  
221-207  
325-226

515-35  
4 A  
K.A. Saparito

A. Nagy  
509-417

266A  
234-86

4.37A  
W.R. Graham

W. Rife 477-525 5A

477-529 33A

477-537 5A

477-537 5A

J. Cimarelli  
477-251 5A

R.E. Fedler

4.51 A

503 A

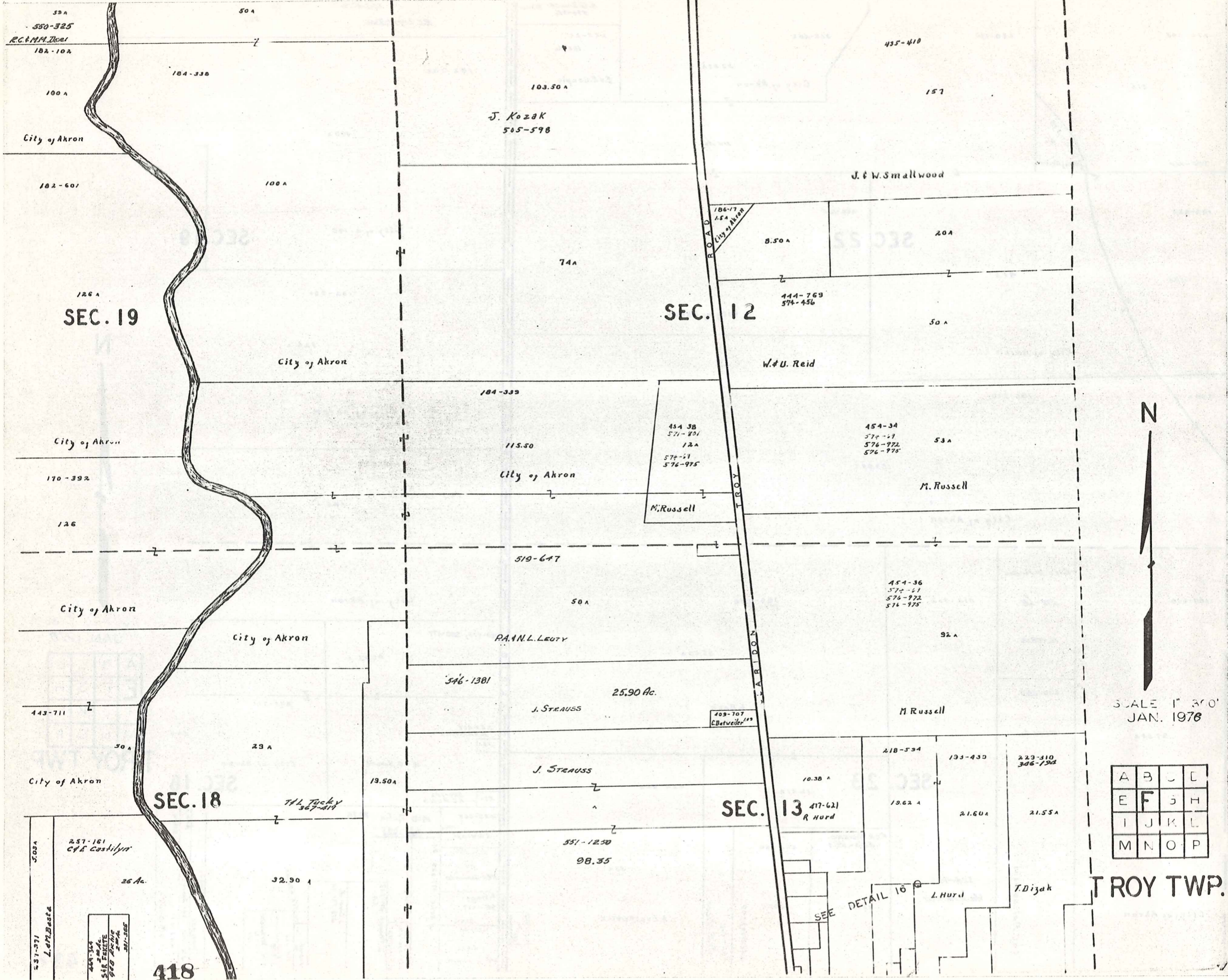
4.51 A

503 A

SCALE 1" = 300'  
JAN. 1976

A	B	C	D
E	F	G	H
I	J	K	L
M	N	O	P

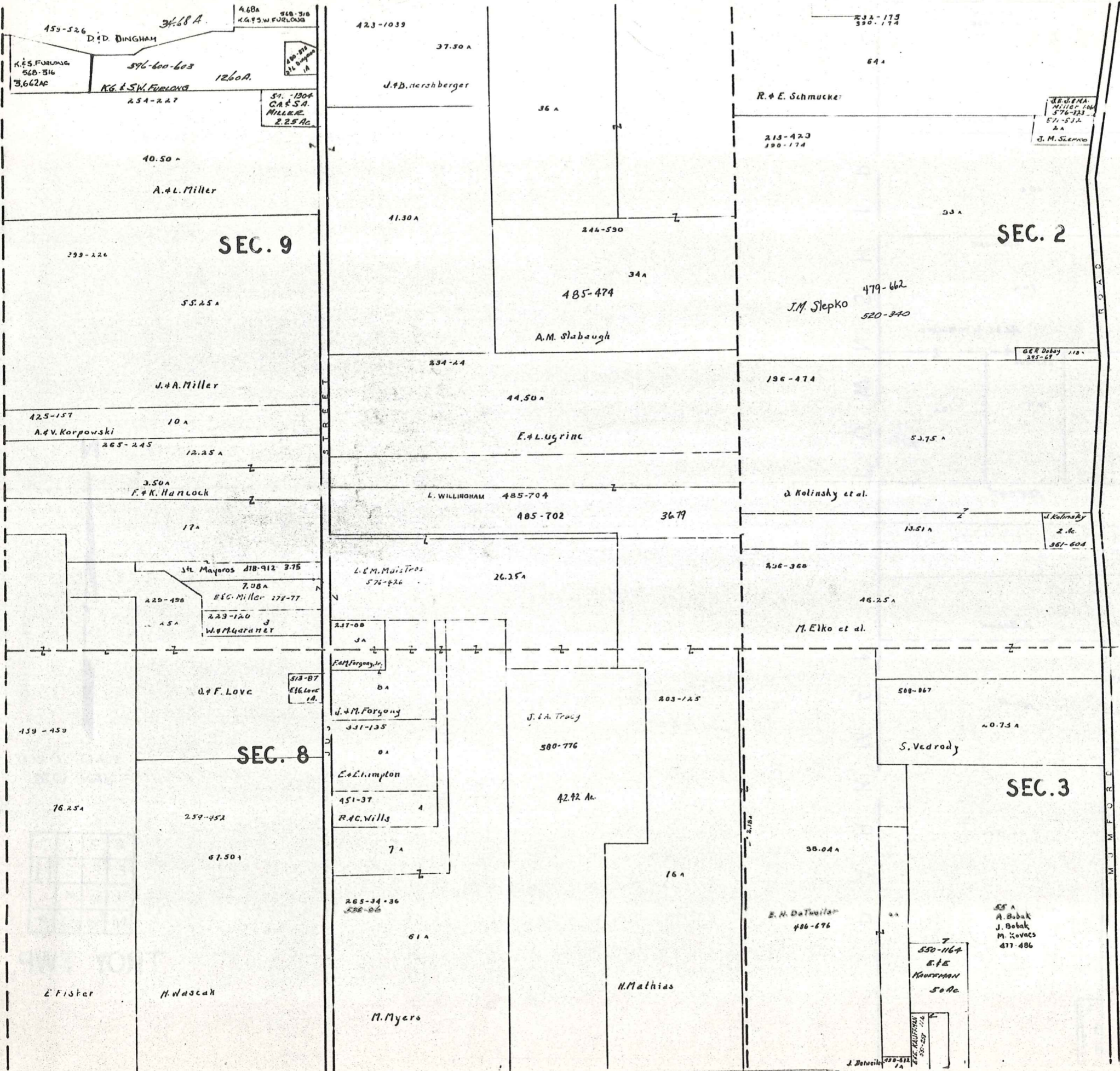
TROY TWP.



SCALE 1" = 300'  
JAN. 1976

A	B	C	D
E	F	G	H
I	J	K	L
M	N	O	P

TROY TWP.



SCALE 1" = 300'  
 JAN. 1976

A	B	C	D
E	F	G	H
I	J	K	L
M	N	O	P

TROY TWP.

A.S. Miller  
195-249  
225-596

245-233  
232  
194 A. Dewey  
389-227  
J. P. Dewey  
J. E. WITE  
1903

47.52 a

F. Doktor

40 a

SEC. 2

208-488

50 a

R. & S. Schumacher

390-174

392-154

255-605

10.91 a

16.44 a

10.71 a

12 a

J. M. Garver

524-947

S. & E. Toth  
557-31

18.00 ac.

42.50 ac.

A. Bobak

437-323  
A. Bobak

444-339

9.87 a

562-103

400-545  
H. Fairbanks

454-331

11.25

A. J. Bobak

580-918

91 a

1.32 a  
R. Durham

457-467  
444-413

W. Scott Track

571-31

3.22 ac.

M. R. Schrader

16.84

R. E. L. F. 4121  
1.064

565-776

SEC. 3

H. J. A. B. Bree  
19.24 ac.

576-396  
1.064

D. H. Bockley

486-837  
R. Schrader

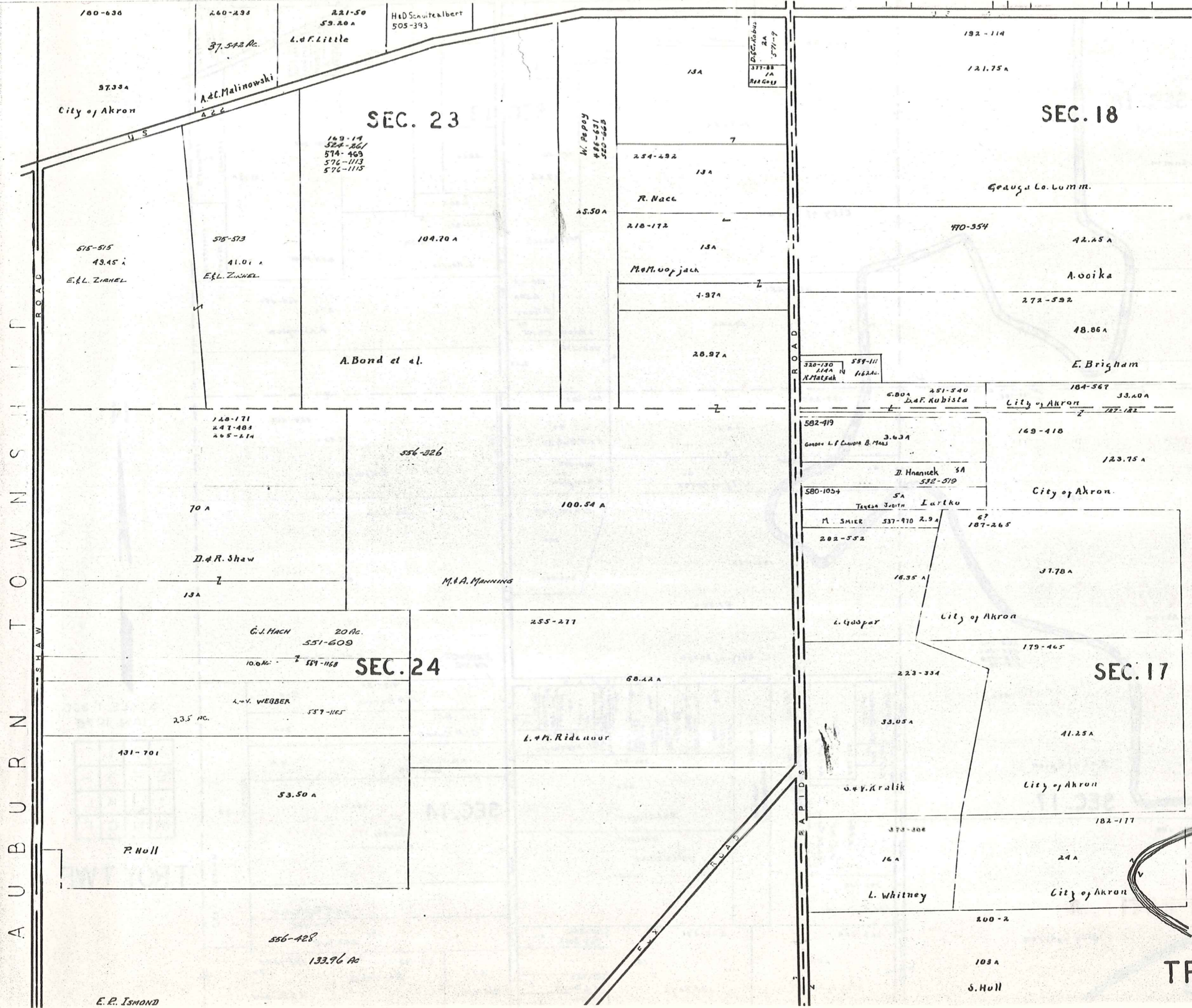
T  
O  
W  
N  
S  
H  
I  
P  
  
P  
A  
R  
K  
M  
A  
N



SCALE 1" = 300'  
JAN. 1976

A	B	C	D
E	F	G	H
I	J	K	L
M	N	O	P

TROY TWP.



A U B U R N S H A W T O W N S H I P

100-636  
260-238  
221-50  
59.20 A  
H & D Schulte Albert  
505-393  
37.572 Ac.  
L. & F. Little  
A. & C. Malinowski  
City of Akron  
57.33 A  
U.S. 422  
149-14  
524-261  
574-469  
576-113  
576-115  
515-515  
49.45 A  
E. L. ZIMMEL  
515-513  
41.01 A  
E. L. ZIMMEL  
104.70 A  
A. Bond et al.

148-171  
247-483  
265-214  
70 A  
D. & R. Shaw  
13 A  
556-326  
100.54 A  
M. & A. MANNING

SEC. 24  
G. J. HACH 20 Ac.  
551-609  
10.0 Ac.  
559-1168  
L. & V. WEBBER  
559-1165  
23.5 Ac.  
431-701  
53.50 A  
P. Hull  
556-428  
133.96 Ac.  
E. R. ISMOND

13 A  
7  
254-292  
13 A  
R. Nacc  
45.50 A  
210-172  
13 A  
M. & M. Uop Jack  
4.97 A  
28.97 A

559-111  
162 A  
R. Matzjak  
6.80 A  
251-540  
D. & F. Kubista  
582-919  
3.63 A  
Gordon L. F. Cannon B. M. 1923  
D. Hnanicek SA  
532-519  
580-1054  
5 A  
Teresa Joann Iartko  
M. SMIER 537-910 2.9 A  
282-552  
16.35 A  
L. Guopar  
179-465  
67  
187-265  
37.78 A  
City of Akron

SEC. 18  
192-114  
121.75 A  
Gaugu Co. Lumm.  
42.45 A  
A. Ooika  
272-592  
48.86 A  
E. Brigham  
184-567  
33.20 A  
City of Akron  
169-418  
123.75 A  
City of Akron  
223-334  
35.05 A  
L. Kralik  
373-306  
16 A  
L. Whitney  
200-2  
103 A  
S. Hull

DEC. 1864  
377-88  
1 A  
Red Golf  
577-9  
192-114  
121.75 A  
470-354  
42.45 A  
A. Ooika  
272-592  
48.86 A  
E. Brigham  
184-567  
33.20 A  
City of Akron  
169-418  
123.75 A  
City of Akron  
223-334  
35.05 A  
L. Kralik  
373-306  
16 A  
L. Whitney  
200-2  
103 A  
S. Hull

SEC. 17  
179-465  
37.78 A  
City of Akron  
223-334  
35.05 A  
L. Kralik  
373-306  
16 A  
L. Whitney  
200-2  
103 A  
S. Hull

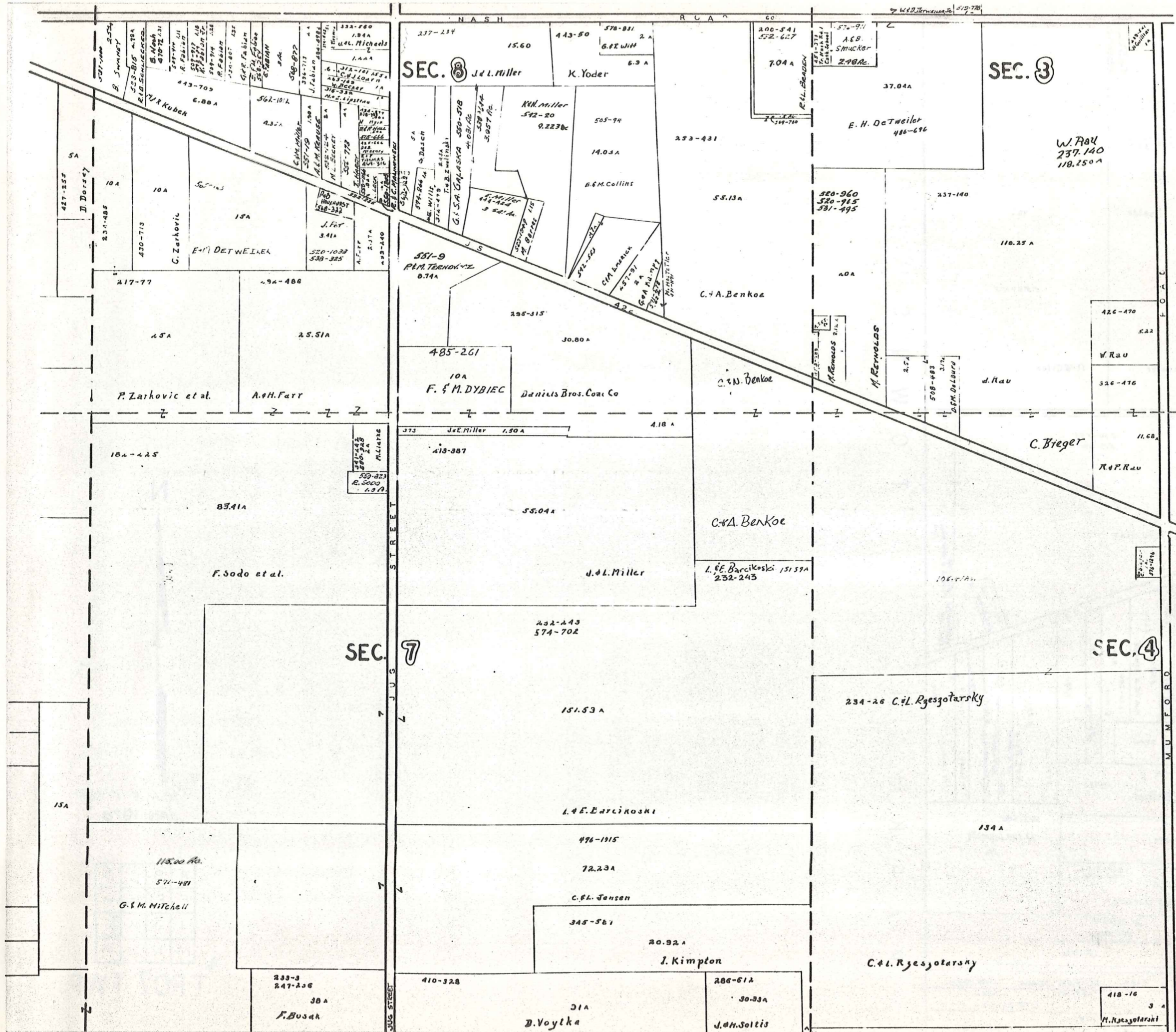


SCALE 1"=300'  
JAN. 1876

A	B	C	D
E	F	G	H
I	J	K	L
M	N	O	P

TRCY TWP.  
421





SCALE 1" = 300'  
 JAN. 1976

A	B	C	D
E	F	G	H
I	J	K	L
M	N	O	P

TROY TWP.  
 423

SEC. 3

237-552  
509-390

69.13A

79A

559-107

A.M. Liebner

D.F.B. Glick

239-454  
179-416

71A

J. Reinas

426-964  
A.M. Liebner  
551-1162  
P.C. G.S. Dull  
550-278  
D.H.S. 109  
J.S. Schmitt  
528-65  
C. Rogers  
532-1182  
2.17A  
W.D. Miller  
496-969  
2.17A

491-332  
434A  
L.M. Hughes  
376-963  
H.A. Thierman  
243-211  
443-209  
D.E. Dierke  
552-797  
F.C. Korbler  
562-789  
A.M. W. W. W. W. W.  
580-793  
E. F. W. W. W.  
392-793  
S. Springer  
515-1055  
430-26  
576-711  
H.N. Hall  
Cemeter  
392-327  
A. Oliver  
387-419  
J.S. Duratia  
565-713  
J. W. W. W.  
R. MURPHY  
574-946  
19.39Ac.  
7.26Ac. W.D. STARK 546-935  
465-301 9.34A  
C.F.C. D. 3509  
424  
213-546  
J.M. W. W. W.  
7.E. M.A. Anna  
558-72  
32.86 Ac.

SEC. 4

14.50 A

R.S. Duratia

S. SUMMERS 7.05A

W.M. Reed

A. Oliver

R. MURPHY

W.D. STARK

7.E. M.A. Anna

532-686  
N.E.N. KUCHA  
17A

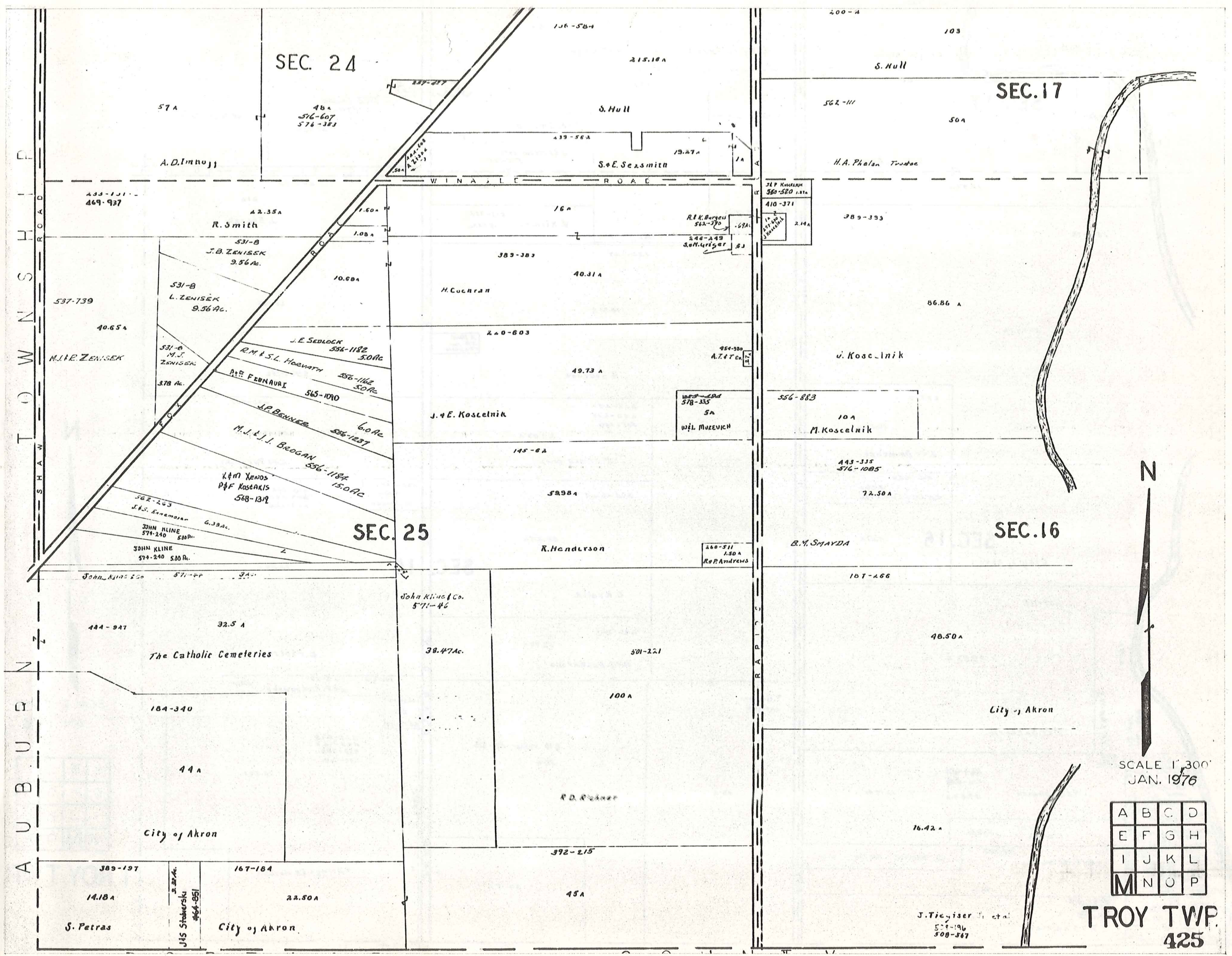
P  
A  
R  
K  
M  
A  
N  
T  
O  
W  
N  
S  
H  
I  
P



SCALE 1" = 300'  
JAN. 1976

A	B	C	D
E	F	G	H
I	J	K	L
M	N	O	P

TROY TWP



AUBURN  
 TOWNSHIP  
 SHAW ROAD  
 WINALEE ROAD

SEC. 24

SEC. 17

SEC. 25

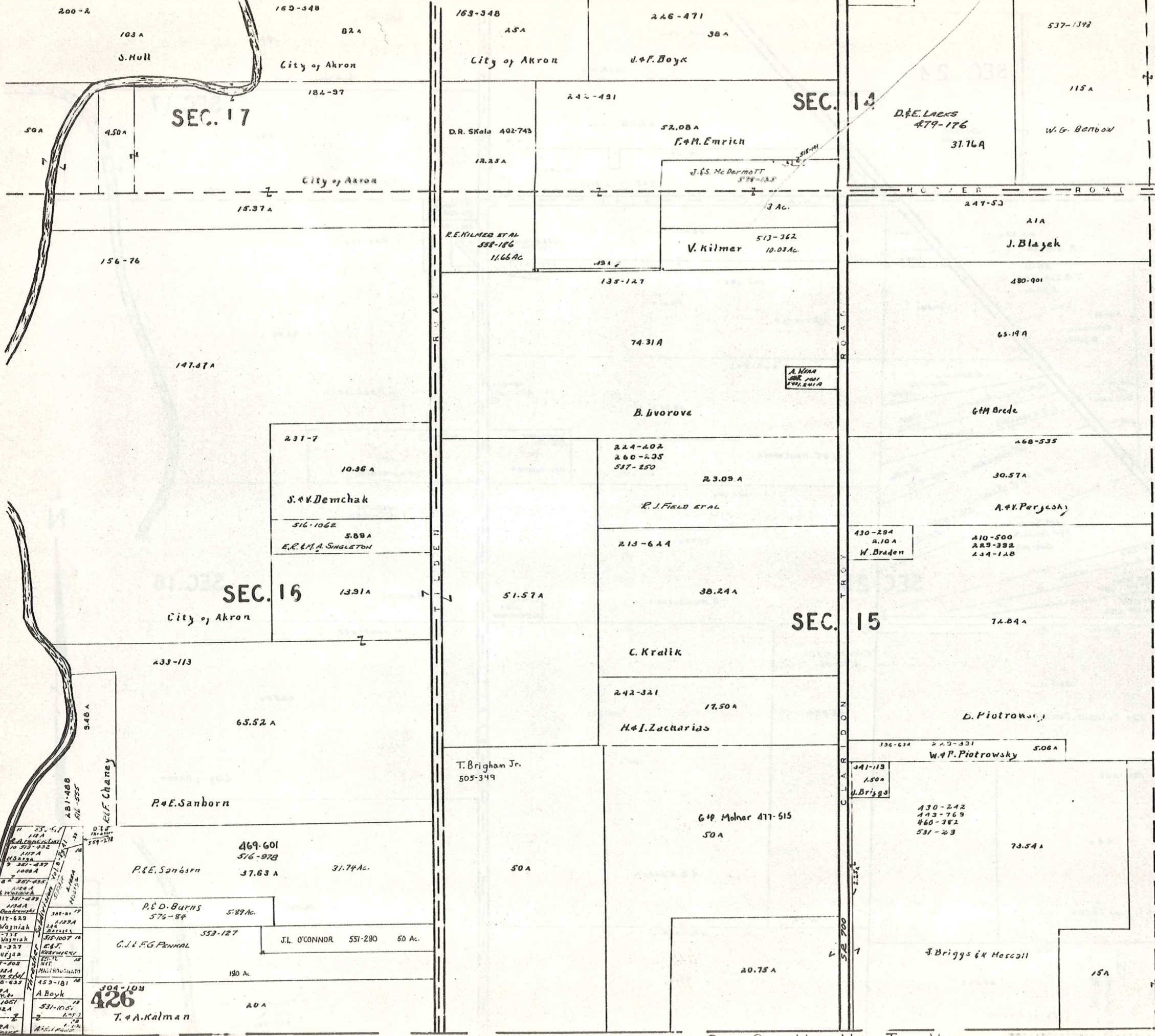
SEC. 16



SCALE 1" = 300'  
 JAN. 1976

A	B	C	D
E	F	G	H
I	J	K	L
M	N	O	P

TROY TWP.  
 425



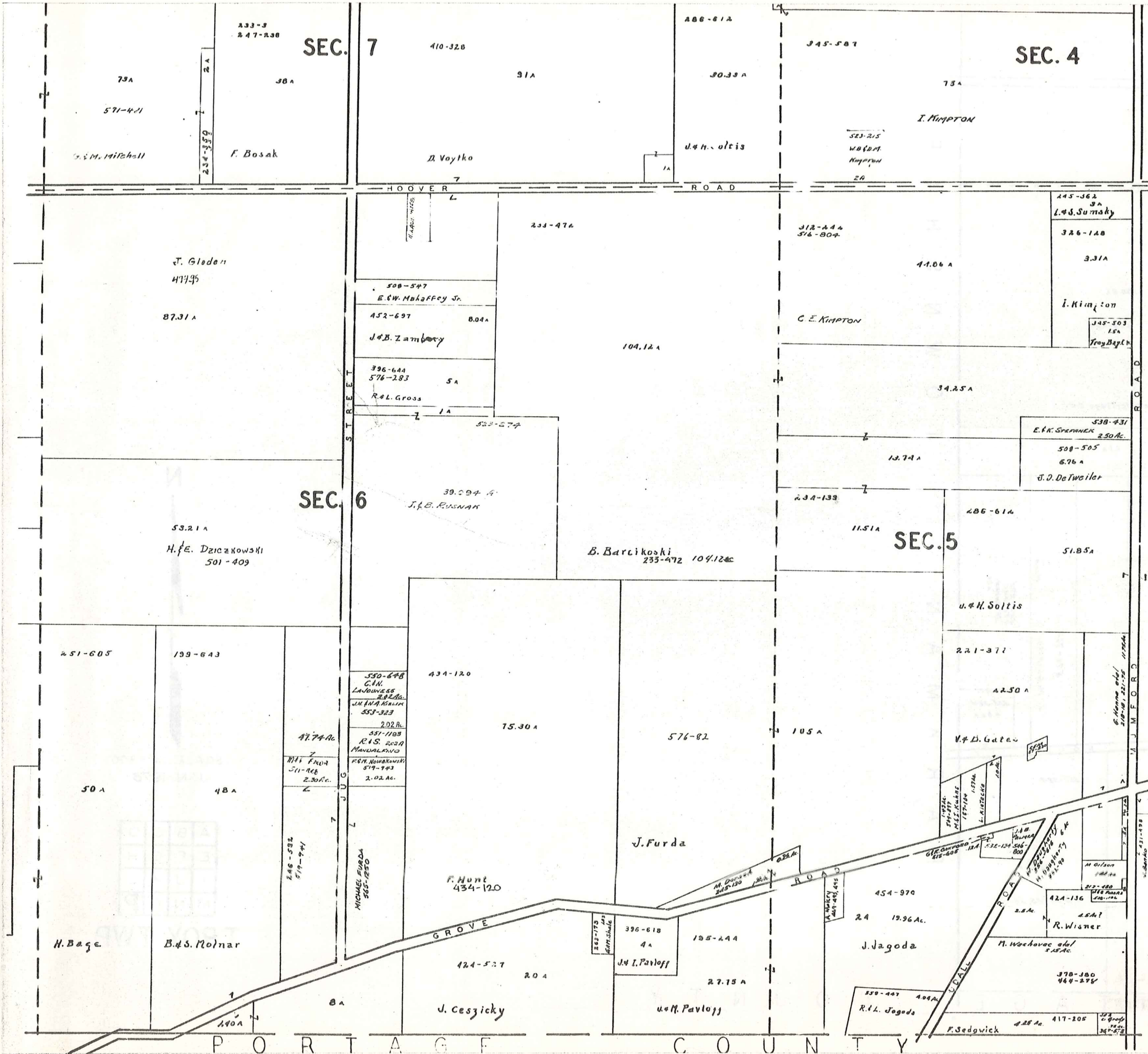
SCALE 1" = 300'  
JAN. 1976

A	B	C	D
E	F	G	H
I	J	K	L
M	N	O	P

TROY TWP.

11	25	47	11	0.12	1/2
12	112	112	112	112	112
13	112	112	112	112	112
14	112	112	112	112	112
15	112	112	112	112	112
16	112	112	112	112	112
17	112	112	112	112	112
18	112	112	112	112	112
19	112	112	112	112	112
20	112	112	112	112	112
21	112	112	112	112	112
22	112	112	112	112	112
23	112	112	112	112	112
24	112	112	112	112	112
25	112	112	112	112	112
26	112	112	112	112	112
27	112	112	112	112	112
28	112	112	112	112	112
29	112	112	112	112	112
30	112	112	112	112	112
31	112	112	112	112	112
32	112	112	112	112	112
33	112	112	112	112	112
34	112	112	112	112	112
35	112	112	112	112	112
36	112	112	112	112	112
37	112	112	112	112	112
38	112	112	112	112	112
39	112	112	112	112	112
40	112	112	112	112	112
41	112	112	112	112	112
42	112	112	112	112	112
43	112	112	112	112	112
44	112	112	112	112	112
45	112	112	112	112	112
46	112	112	112	112	112
47	112	112	112	112	112
48	112	112	112	112	112
49	112	112	112	112	112
50	112	112	112	112	112
51	112	112	112	112	112
52	112	112	112	112	112
53	112	112	112	112	112
54	112	112	112	112	112
55	112	112	112	112	112
56	112	112	112	112	112
57	112	112	112	112	112
58	112	112	112	112	112
59	112	112	112	112	112
60	112	112	112	112	112
61	112	112	112	112	112
62	112	112	112	112	112
63	112	112	112	112	112
64	112	112	112	112	112
65	112	112	112	112	112
66	112	112	112	112	112
67	112	112	112	112	112
68	112	112	112	112	112
69	112	112	112	112	112
70	112	112	112	112	112
71	112	112	112	112	112
72	112	112	112	112	112
73	112	112	112	112	112
74	112	112	112	112	112
75	112	112	112	112	112
76	112	112	112	112	112
77	112	112	112	112	112
78	112	112	112	112	112
79	112	112	112	112	112
80	112	112	112	112	112
81	112	112	112	112	112
82	112	112	112	112	112
83	112	112	112	112	112
84	112	112	112	112	112
85	112	112	112	112	112
86	112	112	112	112	112
87	112	112	112	112	112
88	112	112	112	112	112
89	112	112	112	112	112
90	112	112	112	112	112
91	112	112	112	112	112
92	112	112	112	112	112
93	112	112	112	112	112
94	112	112	112	112	112
95	112	112	112	112	112
96	112	112	112	112	112
97	112	112	112	112	112
98	112	112	112	112	112
99	112	112	112	112	112
100	112	112	112	112	112

426  
T. A. Kalman



SCALE 1" = 300'  
JAN. 1976

A	B	C	D
E	F	G	H
I	J	K	L
M	N	O	P

**TROY TWP.**  
**427**

Ads. 451-395  
Nowikowski  
210-225  
A.P. Cason  
553-1132  
F.W. Cason  
2.78 Ac.

552-72

SEC. 4

D.E.M.A Anna  
32.86 Ac

ALGER ROAD

451-13

D.47 Anna

576-892  
D. Barling

100.6A

508-459

231-238  
M. Patterson

Tom-Lea Heritage Inc.

304-545  
E. H. Howard

21A

286-612

SEC. 5

J. H. Soltis

237-78

J. 771

B. Gates

578-705  
S. Mc Gimpsey

555-871  
558-324  
D. Gates

558-324  
4.04A

G. Hance et al  
210-10, 221-25

307-231  
215 A  
W. Espartero

451-840  
W. Anderson  
G.M. MORGAN  
250,000  
450-340

GROVE ROAD

558-324

335-23

45.05A

52.50A

V.D. GATES, Jr.

451-158  
451-159  
574-615

M. D. Johnson

PORTAGE COUNTY

P  
I  
S  
H  
T  
O  
W  
N  
A  
N  
P  
A  
R  
K  
M  
A  
N



SCALE 1" = 300'  
JAN. 1976

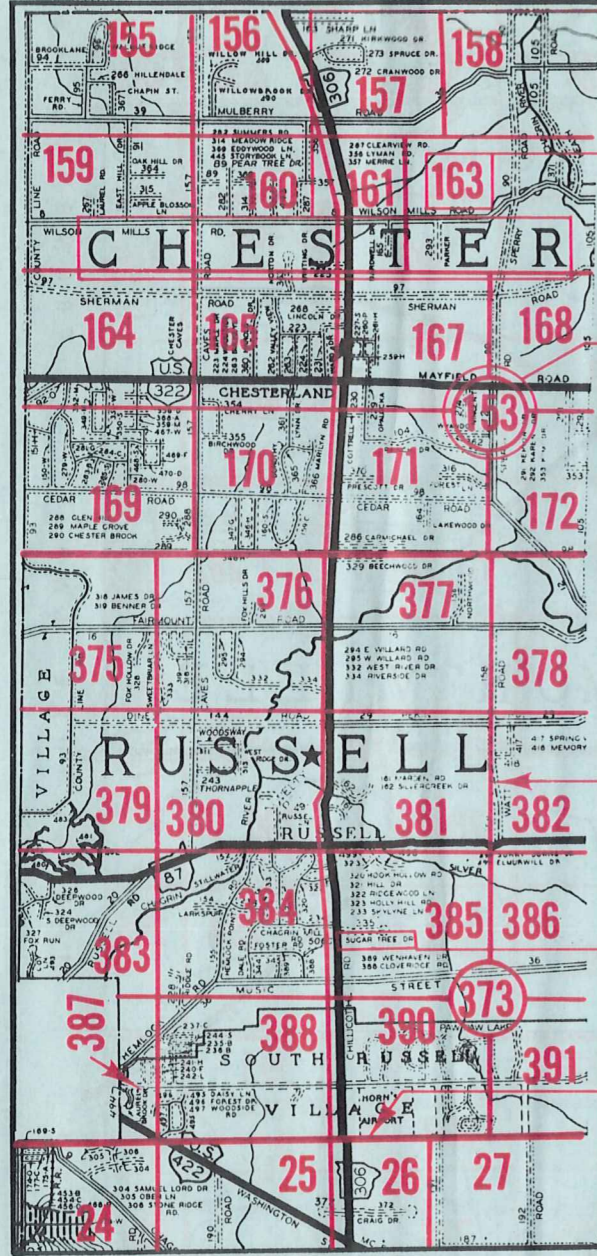
A	B	C	D
E	F	G	H
I	J	K	L
M	N	O	P

TROY TWP.



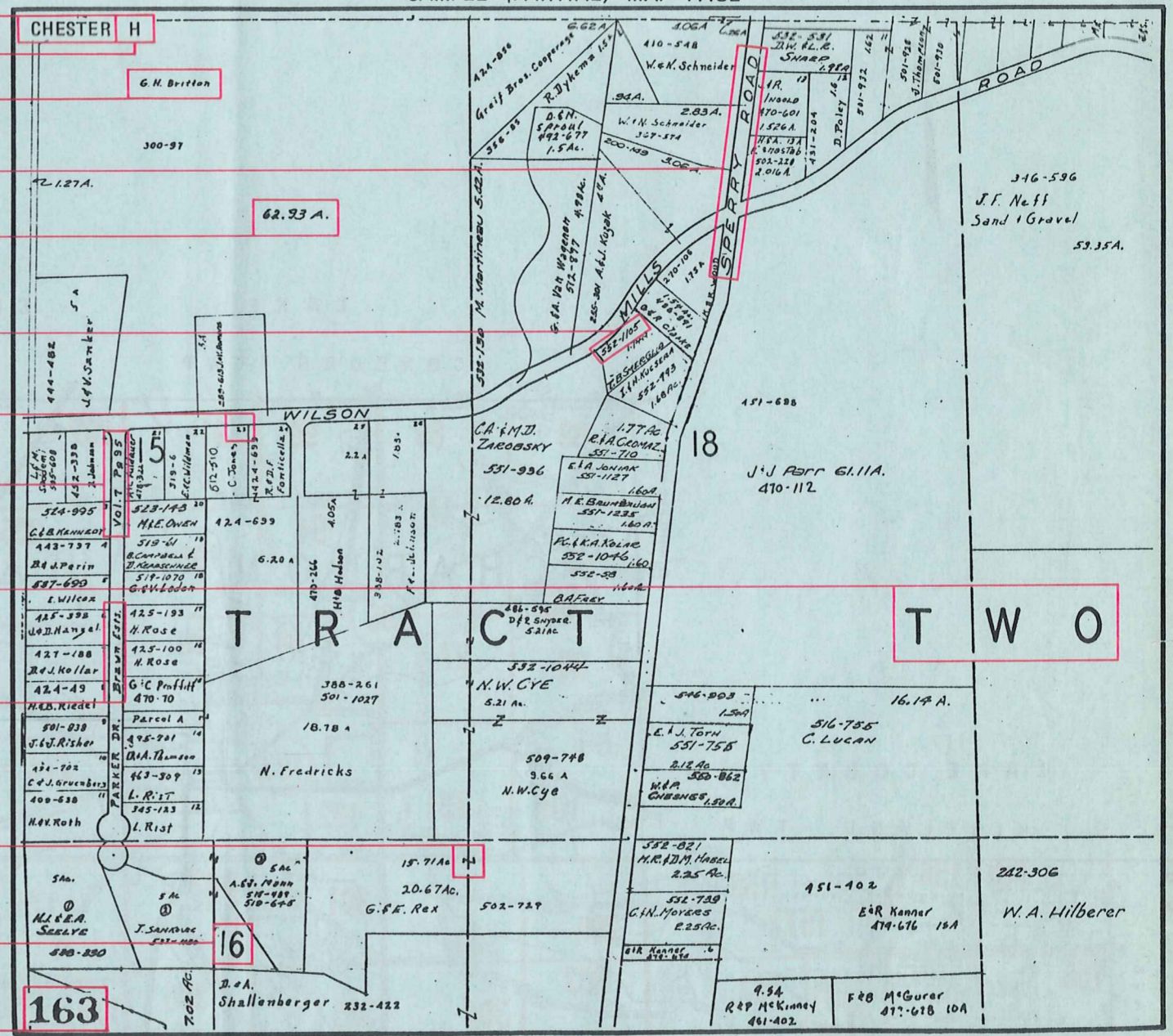
# Explanation and Use Sheet for Geauga County, Ohio

SAMPLE (PARTIAL) COUNTY INDEX MAP



- Township Name
- Map Page Number (Or Letter)
- Owners Name
- Street Name
- Acreage
- Municipality Index Beginning Atlas Page Number
- Deed Book & Page
- Subdivision Lot Number
- Plat Book & Page
- Tract Number
- Atlas Page Boundary
- Subdivision Name
- Street Name
- Denotes Continuous Ownership
- Municipality Index Atlas Page Boundary
- Tract Lot Number
- Atlas Page Number

SAMPLE (PARTIAL) MAP PAGE



## USE OF THE MAP VOLUME

1. LOCATE THE GENERAL AREA OF INTEREST ON THE COUNTY INDEX MAP, ATLAS PAGE 'B'.
2. **A. IF PROPERTY IS IN A TOWNSHIP**, NOTE THE ATLAS PAGE NUMBER. TURN TO THE PAGE INDICATED AND LOCATE SPECIFIC PARCEL OF INTEREST.  
NOTE: ON SOME MAPS YOU MAY BE REFERRED TO A DETAIL SHEET SHOWING AN ENLARGEMENT OF THE AREA. THESE MAPS ARE FOUND AT THE END OF THE REGULAR MAP PAGES IN EACH TOWNSHIP EITHER IN ALPHABETICAL OR NUMERICAL SEQUENCE.
- B. IF PROPERTY IS IN A MUNICIPALITY**, REFER TO THE TABLE OF CONTENTS, ATLAS PAGE 'C', AND NOTE THE BEGINNING ATLAS PAGE NUMBER FOR THE MUNICIPALITY OF INTEREST.
  - (1) TURN TO THE PAGE INDICATED. ON THIS PAGE WILL APPEAR AN INDEX MAP FOR THAT MUNICIPALITY.
  - (2) LOCATE SPECIFIC AREA OF INTEREST AND NOTE THE MAP PAGE NUMBER.  
NOTE: DO NOT CONFUSE THE MAP PAGE NUMBER WITH THE ATLAS PAGE NUMBER IN THESE MUNICIPALITIES.
  - (3) FOLLOW EITHER ALPHABETICAL OR NUMERICAL SEQUENCE TO THE MAP PAGE INDICATED AND LOCATE SPECIFIC PARCEL OF INTEREST.